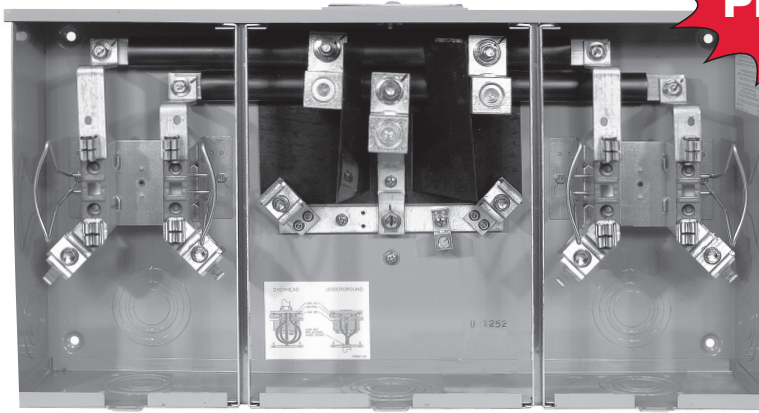


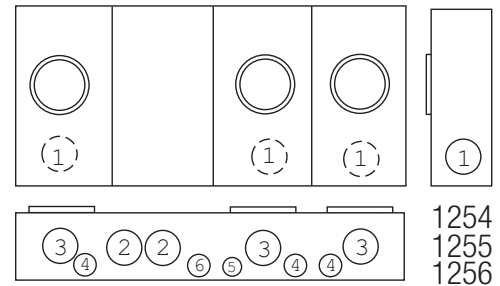
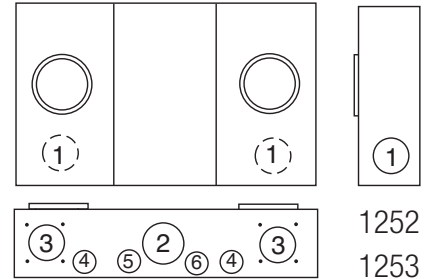
200 Amp Horizontal Gang Sockets

U1252-U1256

New Product!



U1252-X-KK-K3-DLC



200 AMP / POSITION – 4 TERMINAL – RINGLESS – HORN BYPASS – 1Ø3W – OH/UG

CATALOG NUMBER	# OF POS.	HUB	CONNECTORS CU/AL		DIMENSIONS			CONCENTRIC KO'S					
			LINE	LOAD	D"	W"	H"	1	2	3	4	5	6
U1252-X-KK-K3-DLC	2	C.P.	#4-600 kcmil or (2) 1/0-250 kcmil	#6-350 kcmil	5 $\frac{1}{8}$	26 $\frac{1}{2}$	14	2 $\frac{1}{2}$	3	2 $\frac{1}{2}$	$\frac{1}{2}$	$\frac{1}{4}$	1
U1253-X-KK-K3-DLC	3	C.P.	#4-600 kcmil or (2) 1/0-250 kcmil	#6-350 kcmil	5 $\frac{1}{8}$	34 $\frac{11}{16}$	14	2 $\frac{1}{2}$	3	2 $\frac{1}{2}$	$\frac{1}{2}$	$\frac{1}{4}$	1
U1254-X-KK-K3-DLC	4	C.P.	#4-600 kcmil or (2) 1/0-250 kcmil	#6-350 kcmil	5 $\frac{1}{8}$	42 $\frac{7}{8}$	16	2 $\frac{1}{2}$	3	2 $\frac{1}{2}$	$\frac{1}{2}$	$\frac{1}{4}$	1
U1255-X-KK-K3-DLC	5	C.P.	#4-600 kcmil or (2) 1/0-250 kcmil	#6-350 kcmil	5 $\frac{1}{8}$	54 $\frac{7}{8}$	16	2 $\frac{1}{2}$	3	2 $\frac{1}{2}$	$\frac{1}{2}$	$\frac{1}{4}$	1
U1256-X-KK-K3-DLC	6	C.P.	#4-600 kcmil or (2) 1/0-250 kcmil	#6-350 kcmil	5 $\frac{1}{8}$	63 $\frac{1}{16}$	16	2 $\frac{1}{2}$	3	2 $\frac{1}{2}$	$\frac{1}{2}$	$\frac{1}{4}$	1

HUB: For proper hub selection refer to the hub suffix chart on the accessory page. For the **U1255-1256** units, two hub openings are supplied and the extra opening is closed with a closing plate as standard.

FIFTH TERMINAL: For field mounted fifth terminal, order catalog number **K5T** for each meter position, nine o'clock position only.

CONNECTORS: Extruded aluminum connectors are tin plated.

BUSSING: Bussing is $\frac{3}{16}$ " x 1" aluminum on the **U1252-1253**. On the **U1254-6** gangs the bussing is $\frac{3}{8}$ " x 1" aluminum.

BYPASS: Units provided with horn type bypass (suffix **-KK**)

Phone: 816.483.5314

Fax: 816.483.6357

www.milbankmfg.com

U1252DLC 8/10

