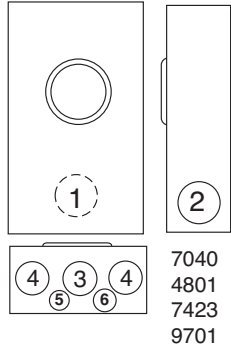


METER MOUNTING EQUIPMENT – OTTERTAIL



U4801-XL-5T9



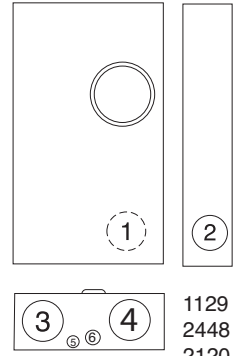
- 7040
- 4801
- 7423
- 9701



U7040-XL-TG



U2120-X



- 1129
- 2448
- 2120
- 2594

200 Amp Std. – 4, 5 & 7 Terminal – Overhead/Underground

SERVICE	NO. OF TERMS	HUB	CATALOG NUMBER	CONNECTORS CU/AL		BY-PASS	DIMENSIONS			CONCENTRIC K.O.'S					
				LINE	LOAD		D"	W"	H"	1	2	3	4	5	6
OH/UG	4	C.P.	U7040-XL	#6-350 kcmil	#6-350 kcmil	NONE	4 ¹ / ₈	11	15 ¹ / ₂	2 ¹ / ₂	2 ¹ / ₂	2 ¹ / ₂	2 ¹ / ₂	1 ¹ / ₄ , ¹ / ₂	1 ¹ / ₄
OH/UG	4	C.P.	U7040-XL-TG	#6-350 kcmil	#6-350 kcmil	NONE	4 ¹ / ₈	11	15 ¹ / ₂	2 ¹ / ₂	2 ¹ / ₂	2 ¹ / ₂	2 ¹ / ₂	1 ¹ / ₄ , ¹ / ₂	1 ¹ / ₄
OH/UG	5	C.P.	U4801-XL-5T9	#6-350 kcmil	#6-350 kcmil	HDLB	4 ⁷ / ₈	13	19	3	2 ¹ / ₂	3	3	1 ¹ / ₄	1 ¹ / ₄ , ¹ / ₂
OH/UG	7	C.P.	U7423-RXL*	#6-350 kcmil	#6-350 kcmil	MDLB	4 ⁷ / ₈	13	19	3	2 ¹ / ₂	3	3	1 ¹ / ₄	1 ¹ / ₄ , ¹ / ₂
OH/UG	7	C.P.	U9701-RXL	#6-350 kcmil	#6-350 kcmil	HDLB	4 ⁷ / ₈	13	19	3	2 ¹ / ₂	3	3	1 ¹ / ₄	1 ¹ / ₄ , ¹ / ₂

HUBS: For proper hub selection, see chart on back of this flyer.

***BYPASS:** Lever operates sliding bypass only and is not jaw clamping.

320 Amp Std. – 4 & 7 Terminal – Heavy Duty Lever Bypass – Side Wireway

SERVICE	NO. OF TERMS	HUB	CATALOG NUMBER	CONNECTORS CU/AL		BY-PASS	DIMENSIONS			CONCENTRIC K.O.'S					
				LINE	LOAD		D"	W"	H"	1	2	3	4	5	6
UG	4	BLANK	U1129-O-5T9**	3/8"-16 stud	3/8"-16 stud	HDLB	4 ⁷ / ₈	15	30	3	3	3	3	1 ¹ / ₄	1 ¹ / ₄ , ¹ / ₂
OH/UG	4	C.P.	U2448-X-5T9**	3/8"-16 stud	3/8"-16 stud	HDLB	6 ¹ / ₂	17 ³ / ₄	34 ¹ / ₈	3	3	4	4	1 ¹ / ₄	1 ¹ / ₂ , ³ / ₄ ,1
UG	7	C.P.	U2120-X**	3/8"-16 stud	3/8"-16 stud	HDLB	6 ¹ / ₂	17 ³ / ₄	31 ³ / ₄	4	3	4	4	1 ¹ / ₄	1 ¹ / ₂ , ³ / ₄ ,1
OH/UG	7	C.P.	U2594-X**	3/8"-16 stud	3/8"-16 stud	HDLB	6 ¹ / ₂	19	34 ¹ / ₈	4	3	4	4	1 ¹ / ₄	1 ¹ / ₂ , ³ / ₄ ,1

****CONNECTORS:** Socket is supplied with 3/8"-16 hex head nuts with Belleville washers. For connector lug kits, order as extra from chart on the back of this flyer. Separate lug kits are required for line and loads.

LEGEND

- O**Blank Top
- XL**Small closure plate on top
- X**Large closure plate on top
- RXL**Large opening with adapter & closure plate
- OH**Overhead
- UG**Underground
- TG**Triplex ground
- 5T9**5th terminal at 9 o'clock position
- MDLB**Medium duty lever bypass
- HDLB**Heavy duty lever bypass



MILBANK[®] METER SOCKET ACCESSORIES

INTERCHANGEABLE UNIT HUBS



HUB ADAPTER PLATE

DESCRIPTION	SUFFIX	CAT. #
HUB ADAPTER	-RRL	S8324

(Converts 4" opening to 2½" opening.)



LARGE "R" OPENING

SUFFIX	SIZE	MILBANK NO.
F	3"	A8110
G	3½"	A8111
H	4"	A8112

SMALL "RL" OPENING

SUFFIX	SIZE	MILBANK NO.
WL	1"	A7514
YL	1¼"	A7515
ZL	1½"	A7516
DL	2"	A7517
EL	2½"	A7518



REMOVABLE HUB CLOSING PLATE

DESCRIPTION	SUFFIX	CAT. #
SMALL (for -RL opening)	-XL	A7551
LARGE (for -R opening)	-X	A9064

TOP SUFFIX CHART

SUFFIX	TOP DESCRIPTIONS
O	Plain Top
RL	Small Hub Opening
R	Large Hub Opening
XL	Small Closing Plate
X	Large Closing Plate
RXL	Large Opening adapted to small C.P.
RRL	Large Opening adapted to small H.O.
XT	Twin Large Hub Openings with C.P.s

HUB SUFFIX CHART

SUFFIX	HUB SIZE	APPLICATION
WL	1"	For -RL Opening
YL	1¼"	For -RL Opening
ZL	1½"	For -RL Opening
DL	2"	For -RL Opening
EL	2½"	For -RL Opening
F	3"	For -R Opening
G	3½"	For -R Opening
H	4"	For -R Opening

METER CLOSING PLATE



6003
(Gray Plastic – Ring-type & Ringless)

BYPASS LINK



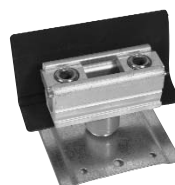
K8180
(Bypass links sold in pairs)

*HEAVY DUTY FIFTH TERMINAL K3865

(K3866 without neutral wire)
*Both kits for units manufactured after August, 1992

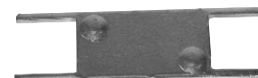


ISOLATED NEUTRAL KIT



K1047

ANTI-INVERSION CLIP



K4802

CONNECTOR KITS



For use with 3/8"-16 stud type units only

SINGLE



TWIN

SUFFIX	CATALOG #	(3 per set) – 1 Ø
K1	K1539	6-350 kcmil
K3	K1540	4-600 kcmil or (2) 1/0-250 kcmil
K3L	K1540L	4-600 kcmil or (2) 1/0-250 kcmil Non-rotating
SUFFIX	CATALOG #	(4 per set) – 3 Ø
K5	K3082	6-350 kcmil (max.)
K7	K3441	4-600 kcmil (max.) or (2) 1/0-250 kcmil

SUFFIX	CATALOG #	(3 per set) – 1 Ø
K2	K1350	6-350 kcmil twin
K2L	K1350L	6-350 kcmil twin Non-rotating
K4	K1541	4-600 kcmil twin
SUFFIX	CATALOG #	(4 per set) – 3 Ø
K6	K3442	6-350 kcmil twin
K8	K3083	4-600 kcmil twin



LOAD TAP CONNECTORS*
(3 per set)

Replaces the **load side** slide-in nut assembly on Milbank 200 amp sockets. Allows for a 100 amp tap location in addition to the #6-350 kcmil load-side connector. **K5022** Includes Safety Barrier Extensions—for applications over 300 VAC.

- K4977-INT** INTERNAL HEX
- K5022-INT** INTERNAL HEX

Utility requirements for this equipment may vary. Always consult the serving utility for their requirements before ordering or installing meter mounting equipment.