

# RV Power Outlet Ring-Type Pedestal

## Voyager RV Series



Phone: 816.483.5314

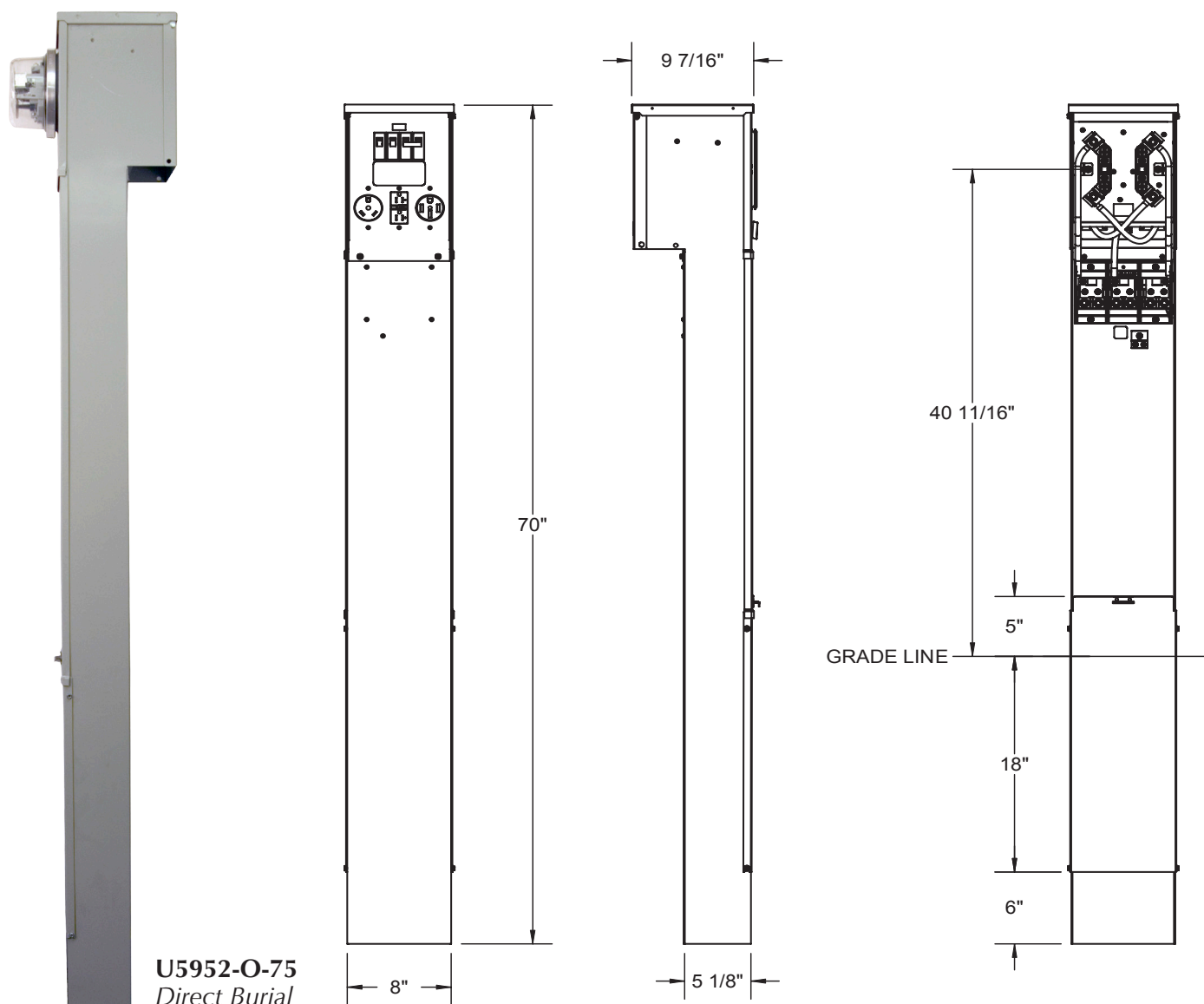
Fax: 816.483.6357

[www.milbankmfg.com](http://www.milbankmfg.com)

VOYAGER 8/10 (2K)

**MILBANK<sup>®</sup>**





## SPECIFICATIONS

- UL Listed 100 Amp, 120/240 Volt—1Ø Power Outlet.
- Ring-type version only.
- Metered and unmetered versions available.
- Short circuit current withstand rating 10,000 RMS symmetrical amperes.
- Type 3R welded enclosure for durable outdoor use.
- Direct burial or pad mounted post constructed with 14 gauge galvanized steel. Two removable covers for ease of installation.
- ASA 61 grey polyester powder coat finish.
- Wire terminations accept copper or aluminum conductors for loop feed wiring.  
Line: (4) #6-350 kcmil                      Ground: (2) #14-2/0                      Neutral: (2) #6-350 kcmil
- Four circuit plated copper interior accepts standard plug-in type circuit breakers. Rated up to 100 amps.
- Components factory wired with stranded copper wire.
- Lockable hinge cover and dead front are removable for installation and maintenance.
- Unit weight — Direct Burial: Metered 55 lbs., Unmetered 37 lbs.  
Pad Mount: Metered 44 lbs., Unmetered 26 lbs.

*Utility requirements for this equipment may vary. Always consult the serving utility for their requirements before ordering or installing equipment in this brochure.*



**U5950/U5951 STANDARD MODELS - UNMETERED**

DIRECT BURIAL CATALOG #	PAD MOUNT CATALOG#	RECEPTACLES	CIRCUIT BREAKERS
U5950-O-41	U5951-O-41	(1) TT30R (1) 5-20R GFI	(1) 30A, 1P, 120V (1) 20A, 1P, 120V
U5950-O-55	U5951-O-55	(1) 14-50R (1) 5-20R GFI	(1) 50A, 2P, 120/240V (1) 20A, 1P, 120V
U5950-O-332	U5951-O-332	(2) TT30R (1) 5-20R GFI	(2) 30A, 1P, 120V (1) 20A, 1P, 120V
U5950-O-75	U5951-O-75	(1) 14-50R (1) TT30R (1) 5-20R GFI	(1) 50A, 2P, 120/240V (1) 30A, 1P, 120V (1) 20A, 1P, 120V

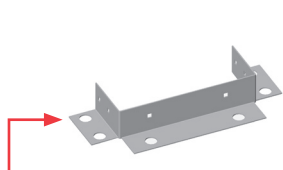
**U5952/U5953 STANDARD MODELS - METERED**

DIRECT BURIAL CATALOG #	PAD MOUNT CATALOG#	RECEPTACLES	CIRCUIT BREAKERS
U5952-O-41	U5953-O-41	(1) TT30R (1) 5-20R GFI	(1) 30A, 1P, 120V (1) 20A, 1P, 120V
U5952-O-55	U5953-O-55	(1) 14-50R (1) 5-20R GFI	(1) 50A, 2P, 120/240V (1) 20A, 1P, 120V
U5952-O-332	U5953-O-332	(2) TT30R (1) 5-20R GFI	(2) 30A, 1P, 120V (1) 20A, 1P, 120V
U5952-O-75	U5953-O-75	(1) 14-50R (1) TT30R (1) 5-20R GFI	(1) 50A, 2P, 120/240V (1) 30A, 1P, 120V (1) 20A, 1P, 120V

All models stocked. Availability subject to prior sale.  
 Note: 20 Amp GFI required at each RV site by UL and NEC 551-71.

*Utility requirements for this equipment may vary. Always consult the serving utility for their requirements before ordering or installing equipment in this brochure.*

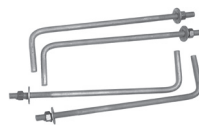




**K5960 - Metered Pedestal**  
**K5959 - Unmetered Pedestal**  
 Field-installed pad mount kit



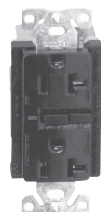
**K5415**  
 Stabilizer foot with hardware



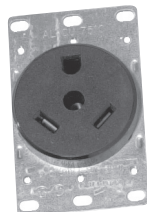
**K5421**  
 Anchor bolt kit



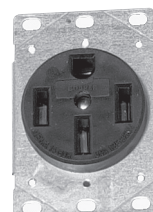
**CL200**  
 E-Z read watt-hour meter



**Z708080-MO**  
 20 amp GFI receptacle  
 NEMA 520



**Z701776-MO**  
 30 amp receptacle  
 NEMA TT30



**Z708767-MO**  
 50 amp receptacle  
 NEMA 1450



**Q120**  
 20 amp, 1 pole  
 circuit breaker



**Q130**  
 30 amp, 1 pole  
 circuit breaker



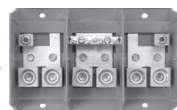
**Q250**  
 50 amp, 2 pole  
 circuit breaker



Neutral assembly shown  
 with 2 insulator supports  
 (Z1002682) and 1 ground  
 connector (Z1002769)  
 for metered version



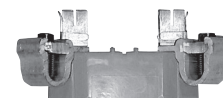
**Z705790-AC**  
 Ground assembly  
 for unmetered version



**Z1144618 - Unmetered**  
**Z1147928 - Metered**  
 Lug landing base



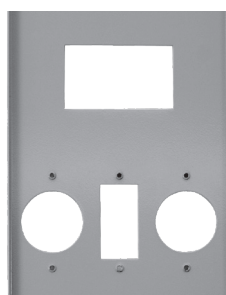
**Z1050761**  
 Circuit breaker base



**Z915141-AC**  
 Left or right  
 meter block assembly



**Z1144586**  
 Hinge cover



**Z1144587 (-75, shown)**  
**Z1144921 (-41)**  
**Z1144946 (-55)**  
**Z1144947 (-332)**  
 Deadfront



**Z1144588**  
 Circuit breaker bracket



**MR-2**  
 Snap-action sealing ring