

Condominium Metering Banks

U5902–U5906 125A Series

U5882–U5886 200A Series



U5882-X



U5882-X

Features

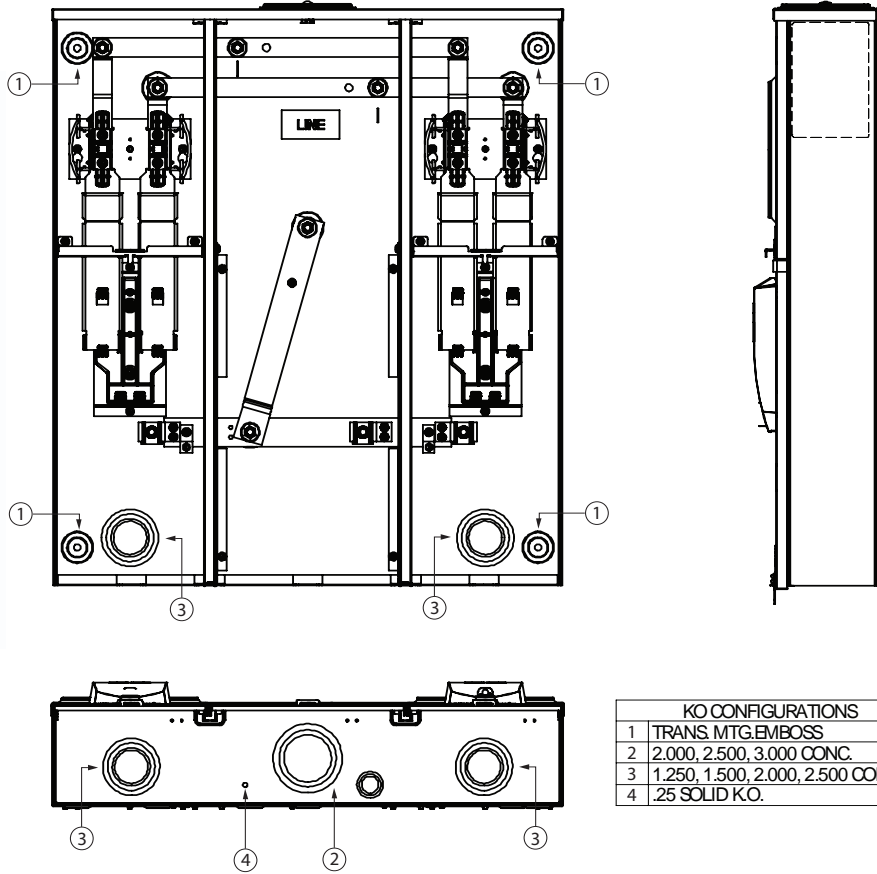
- 125A & 200A (per position) versions available
- 4 Terminal with 5th Terminal option
- Horn bypass option available
- Available in 60, 100, 150 & 200 Amp
- Patent pending bus assembly
- Rated 22K AIC standard
- Overhead or underground service entrance
- Separate lockable breaker reset cover
- Barrel lock provision (optional)

 **MILBANK®**





U5882



KO CONFIGURATIONS	
1	TRANS. MTG.EMBOSS
2	2,000, 2,500, 3,000 CONC.
3	1,250, 1,500, 2,000, 2,500 CONC.
4	.25 SOLID KO.

SPECIFICATIONS

- Listed under UL 67 as “suitable only for use as service equipment” – file number E32628.
- 125 Amp or 200 Amp (per position) continuous duty ringless meter socket. Overall ampere rating limited to main circuit breaker rating.
- For use on 120/240 volt single phase applications.
- Short circuit withstand rating 22K AIC as standard. See wiring diagrams on back page for series rating compatibility.
- Type 3R enclosure constructed with G90 galvanized steel.
- Light gray polyester powder coat finish.
- Service entrance overhead or underground. OH has up to 4” hub opening and UG has up to 4” knockout.
- Wire terminations accept copper or aluminum conductors:
Line & Neutral: # 1/0-350 kcmil Ground: #14-2/0
- Plug-on main circuit breaker: 60 and 100 Amp type **Q** small frame, 150 & 200 amp type **QN** large frame.
- Lockable breaker reset cover.

Condominium Metering Banks

125A / Position

<u>Catalog Number</u>	<u>Amp</u>	<u>Positions</u>	<u>Term</u>	<u>Service</u>	<u>Line</u>	<u>Load</u>	<u>Wt (#)</u>
◆ U5902-X	100	2	4	OH/UG	1/0-350 kcmil	#6-350	58
◆ U5902-X-2/100	100	2	4	OH/UG	1/0-350 kcmil	#6-350	59
◆ U5903-X	100	3	4	OH/UG	1/0-350 kcmil	#6-350	88
◆ U5903-X-3/100	100	3	4	OH/UG	1/0-350 kcmil	#6-350	89
◆ U5904-X	100	4	4	OH/UG	1/0-350 kcmil	#6-350	107
◆ U5904-X-4/100	100	4	4	OH/UG	1/0-350 kcmil	#6-350	108
U5905-X	100	5	4	OH/UG	1/0-350 kcmil	#6-350	128
U5905-X-5/100	100	5	4	OH/UG	1/0-350 kcmil	#6-350	129
U5906-X	100	6	4	OH/UG	1/0-350 kcmil	#6-350	146
U5906-X-6/100	100	6	4	OH/UG	1/0-350 kcmil	#6-350	147

200A / Position

<u>Catalog Number</u>	<u>Amp</u>	<u>Positions</u>	<u>Term</u>	<u>Service</u>	<u>Line</u>	<u>Load</u>	<u>Wt (#)</u>
◆ U5882-X	200	2	4	OH/UG	1/0-350 kcmil	#6-350	58
◆ U5882-X-2/200	200	2	4	OH/UG	1/0-350 kcmil	#6-350	60
◆ U5883-X	200	3	4	OH/UG	1/0-350 kcmil	#6-350	88
◆ U5883-X-3/200	200	3	4	OH/UG	1/0-350 kcmil	#6-350	90
◆ U5884-X	200	4	4	OH/UG	1/0-350 kcmil	#6-350	107
◆ U5884-X-4/200	200	4	4	OH/UG	1/0-350 kcmil	#6-350	109
U5885-X	200	5	4	OH/UG	1/0-350 kcmil	#6-350	128
U5885-X-5/200	200	5	4	OH/UG	1/0-350 kcmil	#6-350	130
U5886-X	200	6	4	OH/UG	1/0-350 kcmil	#6-350	146
U5886-X-6/200	200	6	4	OH/UG	1/0-350 kcmil	#6-350	148

AIC RAITING: All models are rated 22K AIC.

HUB: Units supplied with one (1) closing plate. *Order hubs separately from chart below.*

FIFTH TERMINAL: For field installed 208Y/120 network service, order **K5T**. Installs in the 9 o'clock position.

◆ Stock models

HUB CHART

Conduit size	3"	3-1/2"	4"
Catalog no.	A8110	A8111	A8112

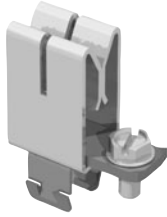


BRANCH CIRCUIT BREAKER CHART

Manufacturer	10K Models	22K Models
Siemens	QP, QN	QPH, QNH
Cutler-Hammer	BR, HPQ, QPGF	—
Square D	Homeline	—
G.E. (50 Amp Max.)	THQL, THQL-GF	—



Utility requirements for this equipment may vary. Always consult the serving utility for their requirements before ordering or installing equipment in this catalog.



K5T
Fifth terminal



QN2200H

Circuit breakers



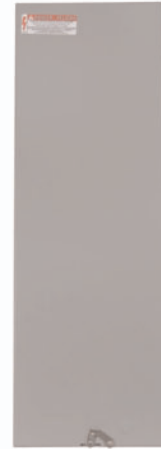
Q2100H



112993
Meter Front



1135467
Lower Front



1133923
Wireway Front

METER MAIN - SERIES 2300S-200
320 AMP 1 Ø 3 WIRE 120/240 VAC
TYPE 3R ENCLOSURE
METER SOCKET RATED 200 AMPS (160 AMPS CONTINUOUS)
SEE CIRCUIT BREAKER HANDLE FOR MAIN BREAKER RATING.

SUITABLE ONLY FOR USE AS SERVICE EQUIPMENT.

THE MAXIMUM SHORT CIRCUIT CURRENT RATING OF THIS DEVICE IS 22,000 RMS SYM AMPS 120/240 VAC IN ACCORDANCE WITH THE TABLE BELOW. THE SHORT CIRCUIT CURRENT RATING IS LIMITED TO THE LOWEST INTERRUPTING RATING OF ANY INSTALLED CIRCUIT BREAKER.
WATT/OUR METER NOT INCLUDED IN SHORT CIRCUIT CURRENT RATING.



ENCLOSED
PANELBOARD
ISSUE NO.
XXXXXX

RATING KAIC	CIRCUIT BREAKER 125A
10	SIEMENS: QP CUTLER-HAMMER: BR, HQP, QPGF. SQUARE D: HOMELINE. G.E.: (50AMP,MAX.)THQL, THQL-GF.
22	SIEMENS: QPH 150-200 AMP
10	SIEMENS: QN
22	SIEMENS: QNH

LINE & LINE NEUTRAL TERMINALS: ARE STUDS, USE CONNECTORS:
(FACTORY) MILBANK ETA-350 #6 AWG-350kcmil CUTAL WIRE
TORQUE TO 250 LB-IN MAX.
(FIELD) CMC AB-350S TORQUE TO 275 LB. IN.
(FIELD) ILSCO TA-350 TORQUE TO 275 LB. IN.
NOTE: TORQUE STUD NUTS TO 200LB. IN. MAX.
LOAD TERMINAL AS SPECIFIED ON CIRCUIT BREAKERS.
LOAD NEUTRAL: #6AWG-350 kcmil AL-CU, TORQUE TO 250 LB-IN MAX.
GROUND: #14-2/0 AWG TORQUE TO 50 LB-IN.

CONDUIT HUB OPENING MUST BE FITTED WITH ONE OF THESE APPROVED DEVICES	
CONDUIT SIZE	CATALOG NO.
3"	# 8110
3 1/2"	# 8111
4"	# 8112
CLOSING PLATE	# 9064
REDUDUCER PLATE	# 9324

LOAD WIRE CONDUCTOR INSULATION, SEE CIRCUIT BREAKER MARKING. IF NO MARKING USE 75° C RATED CONDUCTORS.

PLANT # XXXXXX
MILBANK MFG. CO.
GENERAL OFFICES, K.C. MO

Patent
Pending

1133945
REV. B

METER MAIN - SERIES 2300S-125
200 AMP 1 Ø 3 WIRE 120/240 VAC
TYPE 3R ENCLOSURE
METER SOCKET RATED 125 AMPS (100 AMPS CONTINUOUS)
SEE CIRCUIT BREAKER HANDLE FOR MAIN BREAKER RATING.
SUITABLE ONLY FOR USE AS SERVICE EQUIPMENT.

THE MAXIMUM SHORT CIRCUIT CURRENT RATING OF THIS DEVICE IS 22,000 RMS SYM AMPS 120/240 VAC IN ACCORDANCE WITH THE TABLE BELOW. THE SHORT CIRCUIT CURRENT RATING IS LIMITED TO THE LOWEST INTERRUPTING RATING OF ANY INSTALLED CIRCUIT BREAKER.
WATT/OUR METER NOT INCLUDED IN SHORT CIRCUIT CURRENT RATING.



ENCLOSED
PANELBOARD
ISSUE NO.
XXXXXX

RATING KAIC	CIRCUIT BREAKER 125A OR LESS
10	SIEMENS: QP CUTLER-HAMMER: BR, HQP, QPGF. SQUARE D: HOMELINE. G.E.: (50AMP,MAX.)THQL, THQL-GF.
22	SIEMENS: QPH

LINE & LINE NEUTRAL TERMINALS: ARE STUDS, USE CONNECTORS:
(FACTORY) MILBANK ETA-350 #6 AWG-350kcmil CUTAL WIRE
TORQUE TO 250 LB-IN MAX.
(FIELD) CMC AB-350S TORQUE TO 275 LB. IN.
(FIELD) ILSCO TA-350 TORQUE TO 275 LB. IN.
NOTE: TORQUE STUD NUTS TO 200LB. IN. MAX.
LOAD TERMINAL AS SPECIFIED ON CIRCUIT BREAKERS.
LOAD NEUTRAL: #6AWG-350 kcmil AL-CU, TORQUE TO 250 LB-IN MAX.
GROUND: #14-2/0 AWG TORQUE TO 50 LB-IN.

CONDUIT HUB OPENING MUST BE FITTED WITH ONE OF THESE APPROVED DEVICES	
CONDUIT SIZE	CATALOG NO.
3"	# 8110
3 1/2"	# 8111
4"	# 8112
CLOSING PLATE	# 9064
REDUDUCER PLATE	# 9324

LOAD WIRE CONDUCTOR INSULATION, SEE CIRCUIT BREAKER MARKING. IF NO MARKING USE 75° C RATED CONDUCTORS.

PLANT # xxxxxx
MILBANK MFG. CO.
GENERAL OFFICES, K.C. MO

Patent
Pending

1134461
REV. A

Two-position rating labels. Contact Milbank for information on additional position units.

