

Commercial Pedestals for the Houston, Texas area

- *Attractive*
- *Easy to install*
- *Secure*
- *Cost effective*



Un-Strut Your Stuff...

Milbank Commercial Pedestals are pad-mounted, weatherproof electrical enclosures consisting of a utility pull section with optional meter socket, and a customer section containing distribution and control equipment. Milbank

Commercial Pedestals are an attractive, secure, easy to install and cost-effective solution when underground remote site power distribution and control equipment are required, replacing unsightly and inefficient strut and backboard structures.

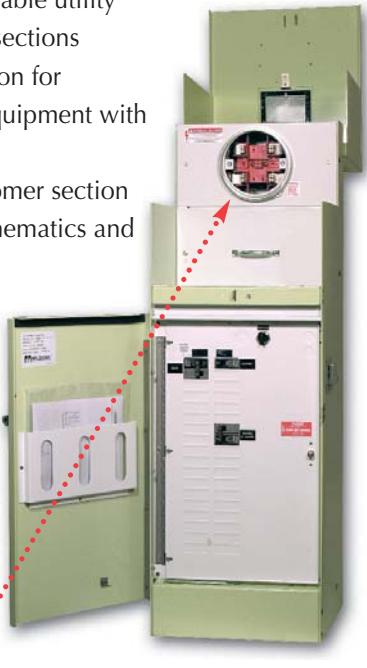


MILBANK[®]



STANDARD FEATURES – HOUSTON AREA COMMERCIAL PEDESTALS

- Type 3R rainproof, vandal-resistant cabinet of polyurethane powder-coated steel (aluminum or stainless steel also available)
- UL listed as enclosed industrial control equipment (UL508)
- Isolated, lockable & sealable utility metering & lug landing sections
- Lockable customer section for distribution & control equipment with internal deadfront
- Print pocket inside customer section door contains wiring schematics and instructions
- Most load centers are UL listed for use with various manufacturers' circuit breakers
- All stainless steel external hardware (rivets, screws, bolts, hinges, handles, hasps and sealing screws)



Ring-type Socket



Utility Lug Landing



Customer Interior

APPLICATIONS

These units are ideal for controlling and metering:

- Traffic signals
- Street lighting
- Irrigation / sprinkler systems
- Cell towers / telephone vaults
- Pump stations
- Temporary power for fairgrounds, swap meets, outdoor markets, portable offices, holiday lights, etc.
- Outdoor lighting for athletic fields, tennis and basketball courts, parking lots, landscaping and subdivision entrances, etc.



CENTERPOINT ENERGY SOCKET CONFIGURATION*

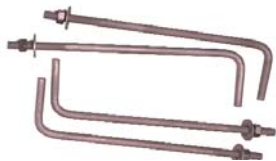


Neutral tap 120 / 240 5th terminal 120 / 208

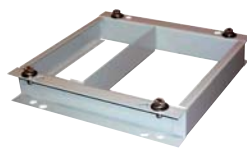
*For proper application, contact Robert Boettger at CNP: 713-207-7507, e-mail robert.boettger@CenterPointEnergy.com



ACCESSORIES



CP-ABK5/8
Anchor bolt kit (includes four 5/8 - 13 x 18" anchor bolts)



CP-16PDMNT-CALT
Pedestal mounting base (includes mounting hardware)



CP-TC7D 7-day time clock kit
CP-TC24H 24-hour time clock kit
CP-TCWIRE Male four-pin connector and wiring harness for use with time clocks other than shown

AVAILABLE FINISHES



Mint Green (Standard)

Black



Desert Tan

Dark Green

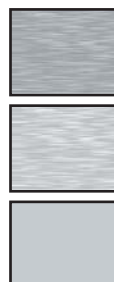
Pine Green



White

Gray

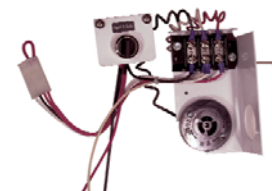
Summerland Gray



Pre-grained Stainless

Anodized Aluminum

Untreated Aluminum



CP-PE-HOA-3POS
Photoelectric cell kit with HOA switch

Painted steel and aluminum models feature polyurethane industrial grade powder coating. Other finishes available by special order – consult factory.



PO Box 419028 • Kansas City, MO 64141-0028
Tel: 816.483.5314 • Fax: 816.483.6357
www.milbankmfg.com

ComPed Houston01/07