

# Commercial Pedestals

- *Attractive*
- *Easy to install*
- *Secure*
- *Cost effective*



**Un-  
Strut Your  
Stuff...**

816.483.5314 phone

816.483.6357 fax

[www.milbankmfg.com](http://www.milbankmfg.com)

ComPed 2/09 (7.5K)

**MILBANK®**





Milbank Commercial Pedestals are pad-mounted, weatherproof electrical enclosures consisting of a utility pull section with optional meter socket, and a customer section containing distribution and control equipment. All electrical equipment (lug landing, meter socket, distribution and control equipment) are protected inside an attractive, vandal-resistant Type 3R cabinet. Utility metering and lug landing compartments are isolated from customer distribution and control equipment.



### ADVANTAGES

The primary advantages of the Commercial Pedestal are its attractive, compact size, secure construction, ease of installation and versatility. All equipment is concealed and protected inside the pedestal. The unit is pad-mountable on a separate cement-embedded base, which can be installed during the early stages of construction, keeping the pedestal out of harms way until needed. We stock standard pedestals ready for immediate shipment, and also engineer and manufacture custom designed pedestals. Milbank Commercial Pedestals are an attractive, secure, easy to install and cost-effective solution when underground remote site power distribution and control equipment are required, replacing unsightly and inefficient strut and backboard structures.



### STANDARD FEATURES

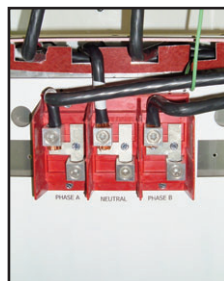
- Type 3R rainproof, vandal-resistant cabinet of polyurethane powder-coated steel (aluminum or stainless steel also available).
- UL listed as enclosed industrial control equipment (UL508).
- Isolated, lockable & sealable utility metering & lug landing sections.
- Lockable customer section for distribution & control equipment with internal deadfront.
- Print pocket inside customer section door contains wiring schematics and installation instructions.
- Most load centers are UL listed for use with various manufacturers' circuit breakers.
- All stainless steel external hardware (rivets, screws, bolts, hinges, handles, hasps and sealing screws).
- Meets EUSERC 308 and other utility standards.



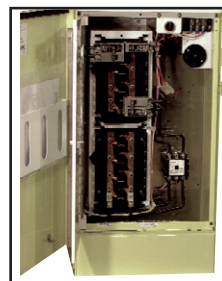
Ringless Socket



Ring-type Socket



Utility Lug Landing



Customer Interior



## APPLICATIONS

Milbank Commercial Pedestals can be used anywhere that distribution and control equipment are required. These units are ideal for controlling and metering:

- Traffic signals
- Street lighting
- Irrigation / sprinkler systems
- Cell towers / telephone vaults
- Pump stations
- Temporary power for fairgrounds, swap meets, outdoor markets, portable offices, holiday lights, etc.
- Outdoor lighting for athletic fields, tennis and basketball courts, parking lots, landscaping and subdivision entrances, etc.



**TEMPORARY POWER**



**TELECOMMUNICATIONS**



**STREET / TRAFFIC LIGHTING**



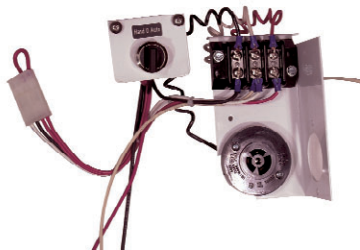
**RESERVE POWER**

## AVAILABLE FACTORY-INSTALLED OPTIONS

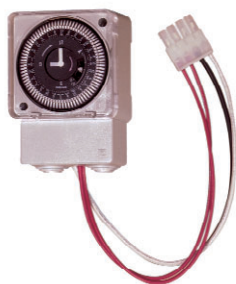
- Meter sockets – ring-type or ringless, 200 amp (unmetered pedestals also available)
- Main and branch breakers or T fuses
- Distribution – copper load centers & panel boards
- Clocks / timers / relays
- Photoelectric cells and controls
- Power receptacles – pin & sleeve, twist lock or straight blade
- Contactors – definite purpose, electrical or mechanically held, IEC and mercury types
- Surge protection & lightning arrestors
- Reserve inlet generator receptacle with interlocked circuit breakers
- Motor starters, relays
- Push button controls
- Thermostat controls, fans and heating strips
- Power blocks and terminal blocks
- Steel, aluminum and plywood back boards
- Transformers
- Interlock devices for circuit breakers
- Available in steel, aluminum (raw painted or anodized) or stainless steel construction with powder-coated finish available in 8 standard colors or special ordered RAL colors.
- Available for applications up to 400 amp, 120V, 208V, 240V, 277V, 480V - 1Ø or 3Ø.



**ACCESSORIES**



**CP-PE-TYP5-3POS**  
Photoelectric cell kit with HOA switch for field installation



**CP-TC7D** 7-day time clock kit

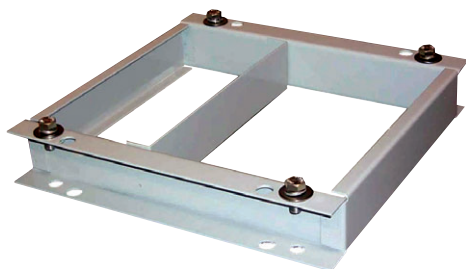
**CP-TC24H** 24-hour time clock kit

**CP-TCWIRE** Male four-pin connector and wiring harness for use with time clocks other than above

**105J**  
Fifth terminal kit for use with ring-type meter sockets



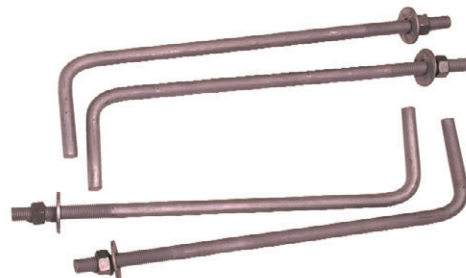
**K3865**  
Fifth terminal kit for use with ringless meter sockets



**CP-16PDMNT-CALT**  
Pedestal mounting base (includes mounting hardware)



**CP-16FPAD**  
Fiberglass pedestal mounting base for 16" pedestal (direct buried)



**CP-ABK5/8**  
Anchor bolt kit (includes four 5/8 - 13 x 18" anchor bolts)

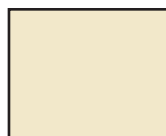
**AVAILABLE FINISHES**



Mint Green (Standard)



Black



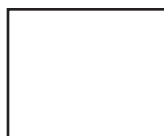
Desert Tan



Dark Green



Pine Green



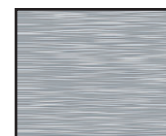
White



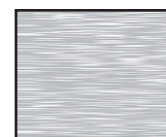
Gray



Summerland Gray



Pre-grained Stainless



Anodized Aluminum



Untreated Aluminum

Painted steel and aluminum models feature polyurethane industrial grade powder coating. Other finishes available by special order – consult factory.

