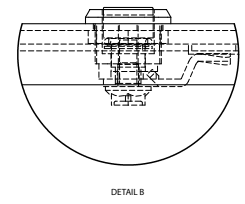
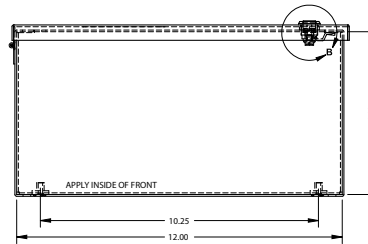
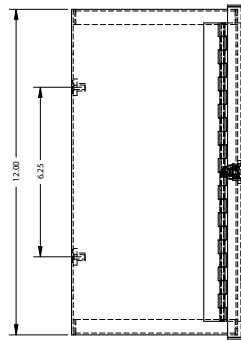
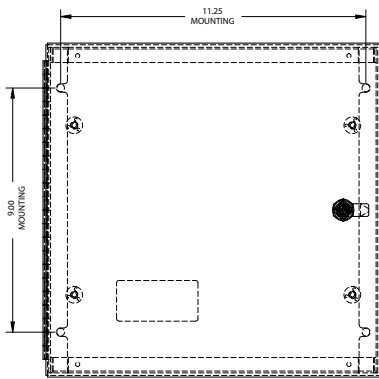


INDUSTRY STANDARDS

- NEMA Type 1
- UL 50—Type 1
- CUL-Type1 (Equivalent to CSA)



APPLICATION

- Designed for use in control and instrumentation applications.
- For indoor use in applications where moisture and dust are not a problem.

CONSTRUCTION

- Enclosure and cover manufactured from 16 gauge steel.
- The door is attached to the enclosure with a continuous hinge.
- The door is secured closed by a quarter-turn, screwdriver-operated flush catch.
- Panel mounting studs are provided for optional back panel.
- Provisions for mounting optional cylinder lock.
- Mounting holes are provided on the back of enclosure.

FINISH

- ANSI 61 gray polyester powder coating over phosphatized G90 galvanized steel.

ACCESSORIES

- Panel nos. listed below— see optional SBP Series pg. B19 for specification information.
- Touch-up paint – see Accessories pg. B34.
- Lock – see Accessories pg. B33.

CATALOG NUMBER	PRODUCT FAMILY	UPC NUMBER 7-84572-	WEIGHT (LBS)	CARTON QUANTITY	W X H X D	KNOCKOUT	
						A SIDE	B SIDE
664-LC1	CAB1	18731	3.3	9	6 x 6 x 4	A-66SBP	NONE
684-LC1	CAB1	18734	4.1	9	6 x 8 x 4	A-86SBP	NONE
884-LC1	CAB1	18955	5.1	6	8 x 8 x 4	A-88SBP	NONE
8104-LC1	CAB1	18733	6	5	8 x 10 x 4	A-108SBP	NONE
8106-LC1	CAB1	18113	7.4	4	8 x 10 x 6	A-108SBP	NONE
10104-LC1	CAB1	18732	7.1	3	10 x 10 x 4	A-1010SBP	F-G-H-I
10106-LC1	CAB1	18098	8.6	2	10 x 10 x 6	A-1010SBP	NONE
10124-LC1	CAB1	18099	8.1	3	10 x 12 x 4	A-1210SBP	NONE
10126-LC1	CAB1	18100	9.8	2	10 x 12 x 6	A-1210SBP	NONE
12124-LC1	CAB1	16261	9.3	4	12 x 12 x 4	A-1212SBP	NONE
12126-LC1	CAB1	18101	11.5	3	12 x 12 x 6	A-1212SBP	NONE
12166-LC1	CAB1	18106	15	2	12 x 16 x 6	A-1612SBP	NONE
12206-LC1	CAB1	18107	17	2	12 x 20 x 6	A-2012SBP	NONE
16166-LC1	CAB1	27625	22.5	2	16 x 16 x 6	A-1616SBP	NONE
16206-LC1	CAB1	27623	24	2	16 x 20 x 6	A-2016SBP	NONE
18186-LC1	CAB1	26910	25	2	18 x 18 x 6	a-1818sbp	NONE
20206-LC1	CAB1	27635	26	1	20 x 20 x 6	A-2020SBP	NONE
20246-LC1	CAB1	27633	30	1	20 x 24 x 6	A-2420SBP	NONE
20248-LC1	CAB1	27632	32	1	20 x 24 x 8	A-2420SBP	C-D-E-F-G
24246-LC1	CAB1	26313	40	1	24 x 24 x 6	A-2424SBP	F-G-H-I
24248-LC1	CAB1	27631	42	1	24 x 24 x 8	A-2424SBP	NONE
242412-LC1	CAB1	18956	46	1	24 x 24 x 12	A-2424SBP	NONE
24306-LC1	CAB1	32296	47	1	24 x 30 x 6	A-3024SBP	NONE
24366-LC1	CAB1	26564	57.4	1	24 x 36 x 6	A-3624SBP	NONE
24368-LC1	CAB1	27629	62	1	24 x 36 x 8	A-3624SBP	NONE
30308-LC1	CAB1	27628	63.6	1	30 x 30 x 8	A-3030SBP	NONE
30366-LC1	CAB1	27627	69	1	30 x 36 x 6	A-3630SBP	A-B-C-D-E-F-G-H-I

Utility requirements for this equipment may vary. Always consult the serving utility for their requirements before ordering or installing equipment in this catalog.

