



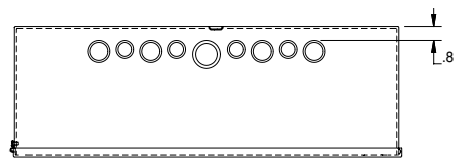
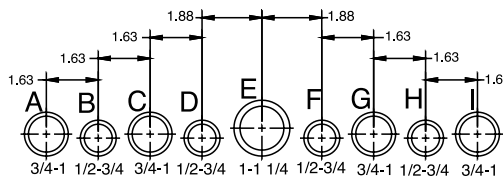
- Formed stainless hinges.
- Mounting holes on back.
- Provision for grounding, with green grounding screw.
- Flush pull ring for easy opening of door.

FINISH

- Finish: ANSI 61 gray polyester finish inside and out unless otherwise specified.

ACCESSORIES

- Note: Use wood panels only for HC1 enclosures (WB series, pg. B19).
- Touch-up paint – see Accessories pg. B34.



INDUSTRY STANDARDS

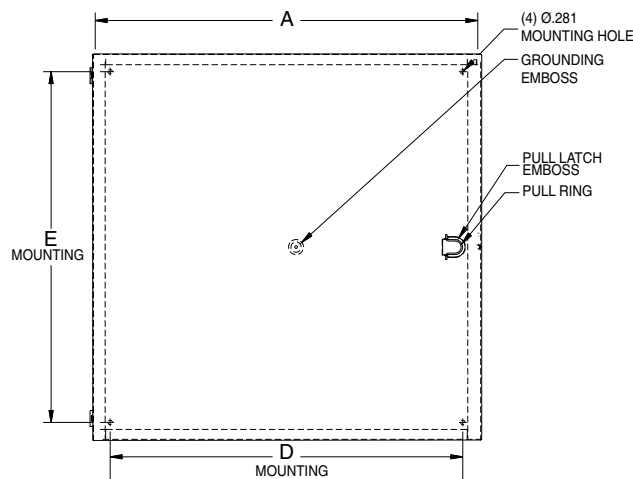
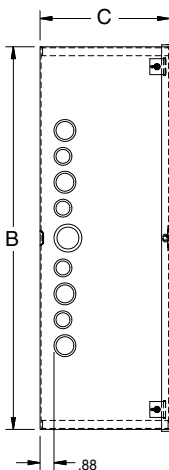
- NEMA - Type 1
- UL 50 - Type 1
- CUL - Type 1 (Equivalent to CSA)

APPLICATION

- Designed for use as a junction or pull box
- For indoor use to provide protection against contact with enclosed equipment where dust and moisture are not a problem.

CONSTRUCTION

- Enclosure made from 16 or 14 gauge steel.
- Available with or without knockouts. For no knockouts, refer to suffix **-NK** in catalog number.
- Available with or without paint. For no paint, refer to suffix **-NP** in catalog number. Note: Unpainted enclosures are made from galvanized steel.



CATALOG NUMBER	PRODUCT FAMILY	UPC NUMBER 7-84572-	WEIGHT (LBS)	CARTON QUANTITY	W X H X D	KNOCKOUT	
						A SIDE	B SIDE
664-HC1	HC1C	10798	3.4	9	6 x 6 x 4	B-C-D	NONE
664-HC1-NK	HC1C	19930	3.4	9	6 x 6 x 4	NONE	NONE
664-HC1-NK-NP	HC1C	21398	3.4	9	6 x 6 x 4	NONE	NONE
666-HC1	HC1C	10817	4.3	6	6 x 6 x 6	B-C-D	NONE
666-HC1-NK	HC1C	15354	4.3	6	6 x 6 x 6	NONE	NONE
684-HC1	HC1C	31817	4	9	6 x 8 x 4	B-C-D	F-G-H-I
684-HC1-NK	HC1C	21532	4	9	6 x 8 x 4	NONE	NONE
884-HC1	HC1C	10935	5.2	6	8 x 8 x 4	F-G-H-I	NONE
884-HC1-NK	HC1C	10936	5.2	6	8 x 8 x 4	NONE	NONE
884-HC1-NP	HC1C	30189	5.2	6	8 x 8 x 4	F-G-H-I	NONE
886-HC1	HC1C	10953	6.5	4	8 x 8 x 6	F-G-H-I	NONE
886-HC1-NK	HC1C	10954	6.5	4	8 x 8 x 6	NONE	NONE
886-HC1-NP	HC1C	30190	6.5	4	8 x 8 x 6	F-G-H-I	NONE
8124-HC1-NK	HC1C	32340	7	3	8 x 12 x 4	NONE	NONE
10104-HC1	HC1C	10013	7.3	3	10 x 10 x 4	C-D-E-F-G	NONE
10104-HC1-NK	HC1C	10014	7.3	3	10 x 10 x 4	NONE	NONE
10106-HC1	HC1C	10028	8	2	10 x 10 x 6	C-D-E-F-G	NONE
10106-HC1-NK	HC1C	10029	8	2	10 x 10 x 6	NONE	NONE
10124-HC1	HC1C	10064	7.9	3	10 x 12 x 4	C-D-E-F-G	C-D-E-F-G
1284-HC1	HC1C	10252	6.7	3	12 x 8 x 4	C-D-E-F-G	F-G-H-I
12124-HC1	HC1C	10110	9.3	4	12 x 12 x 4	C-D-E-F-G	NONE
12124-HC1-NK	HC1C	10111	9.3	4	12 x 12 x 4	NONE	NONE
12124-HC1-NK-NP	HC1C	21399	9.3	4	12 x 12 x 4	NONE	NONE
12126-HC1	HC1C	10129	11	3	12 x 12 x 6	C-D-E-F-G	NONE
12126-HC1-NK	HC1C	10130	11	3	12 x 12 x 6	NONE	NONE
12126-HC1-NK-NP	HC1C	30187	11	3	12 x 12 x 6	NONE	NONE
12184-HC1	HC1C	10201	12.5		12 x 18 x 4	C-D-E-F-G	A-B-C-D-E-F-G-H-I
18186-HC1	HC1C	10308	19.5	2	18 x 18 x 6	A-B-C-D-E-F-G-H-I	NONE
18186-HC1-NK	HC1C	32006	19.5	2	18 x 18 x 6	NONE	NONE
18186-HC1-NK-NP	HC1C	30188	19.5	2	18 x 18 x 6	NONE	NONE
18246-HC1	HC1C	10337	26	1	18 x 24 x 6	A-B-C-D-E-F-G-H-I	A-B-C-D-E-F-G-H-I
18246-HC1-NK	HC1C	32005	26	1	18 x 24 x 6	NONE	NONE

Utility requirements for this equipment may vary. Always consult the serving utility for their requirements before ordering or installing equipment in this catalog.



COMMERCIAL ENCLOSURES
HC1—HINGE COVER JUNCTION BOXES—TYPE 1