

Versa-Ped Service Pedestals

Approved by Florida Meter Group

**Florida Power & Light
Tampa Electric Company
Progress Energy**

APPROVED BY



Represented by:

Fox-Rowden-McBrayer, Inc.

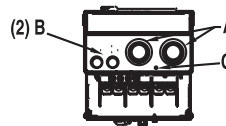
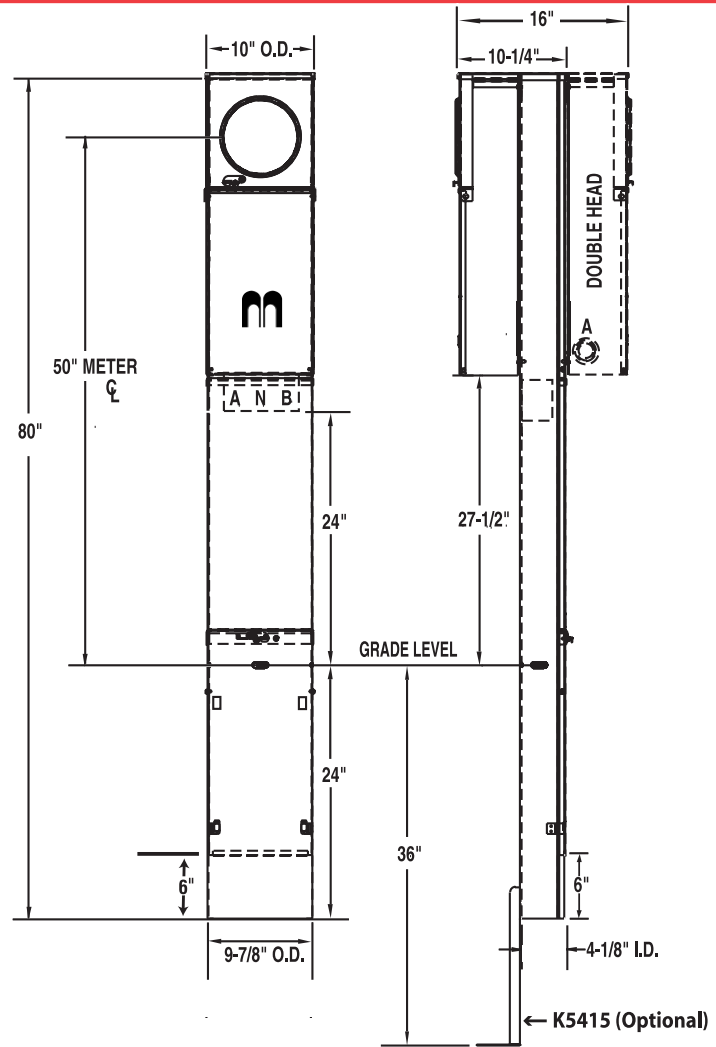
Tampa: 800-282-0643

Deerfield Beach: 800-432-4895





U5136-O-200S-FMG with series wired main & K5400-520GR kit



KO's	
A	= 1, 1-1/4, 1-1/2, 2
B	= 1/2, 3/4
C	= 1/4 SOLID

SPECIFICATIONS

- UL Listed File E90945 – conforms to Florida Meter Group requirements
- 200 amp maximum, 120/240 volt, single phase, three wire meter socket
- Ringless meter socket and stainless steel latch
- Short circuit withstand rating 22K AIC.
- Type 3R construction for durable outdoor use, one piece post – lockable and sealable
- Milbank grey polyester powder coat finish
- Wire terminations accept copper or aluminum conductors
- Line & Neutral: (2) #6-350 kcmil per phase
- Line Ground: (4) #14-1/0
- Load (CB): 2/0 to 300 kcmil per pole
- Load Neutral: (1) #6-350 kcmil
- Load Ground: (2) #14-1/0, (4) #14/6
- Milbank plug-in main circuit breaker. Available in 100, 125, 150 & 200 amp. Type UQFPH-M.
- Four-circuit plated copper interior accepts (2) 2-pole or (4) 1-pole standard plug-in type circuit breakers up to a total of 125 amps maximum. Acceptable manufacturers: Cutler-Hammer, GE or Siemens
- Factory or field installable receptacle bridge and receptacle / circuit breaker kits available. See Accessories.
- The **K5415** stabilizer foot must be installed to comply with FMG requirements.






SINGLE PEDESTAL

<u>CATALOG NUMBER</u>	<u>MAIN BREAKER</u>	<u>AMPS</u>	<u>INTERIOR</u>	<u>WEIGHT (lbs)</u>
U5136-O-100S-FMG	UQFBH-M-100	100	4 Circuit	82
U5136-O-125S-FMG	UQFBH-M-125	125	4 Circuit	82
◆ U5136-O-150S-FMG	UQFBH-M-150	150	4 Circuit	82
U5136-O-200S-FMG	UQFBH-M-200	200	4 Circuit	82
◆ U5136-O-FMG	provision for UQFPH-M Series	—	4 Circuit	80

DOUBLE PEDESTAL

<u>CATALOG NUMBER</u>	<u>MAIN BREAKER</u>	<u>AMPS</u>	<u>INTERIOR</u>	<u>WEIGHT (lbs)</u>
U5137-O-100S-FMG	(2) UQFBH-M-100	100	4 Circuit	115
U5137-O-125S-FMG	(2) UQFBH-M-125	125	4 Circuit	115
◆ U5137-O-150S-FMG	(2) UQFBH-M-150	150	4 Circuit	115
◆ U5137-O-200S-FMG	(2) UQFBH-M-200	200	4 Circuit	115
◆ U5137-O-FMG	provision for (2) UQFP-M Series	—	4 Circuit	111

RECEPTACLE / CIRCUIT BREAKER KITS AND ACCESSORIES (ORDER SEPARATELY)

<u>CATALOG #</u>	<u>RECEPTACLE</u>	<u>CIRCUIT BREAKER</u>	<u>CONDUCTOR</u>	<u>CONFIGURATION</u>
◆ K5400-520GR	5-20R Duplex GFI	20 Amp, 1 Pole	12 Awg	 GFI Rec.
◆ K5400-TT30	TT30R	30 Amp, 1 Pole	10 Awg	
◆ K5400-1450	14-50R	50 Amp, 2 Pole	8 Awg	
◆ K5400-BRIDGE-1POS	Self-grounded one position receptacle bridge with hardware			
◆ K5400-BRIDGE-2POS	Self-grounded two position receptacle bridge with hardware			
◆ K5T	5th Terminal for 208y / 120 volt 3-wire service			
◆ K5193	Bus kit to convert series-wired main breaker to parallel			
◆ K5194	Wire kit to convert parallel-wired main breaker to series			
◆ K3450	Telephone / CATV equipment mounting bracket (mounts left or right)			

- A **K5415** Stabilizer Foot is packaged inside pedestal and is included in the price. It must be installed to comply with Florida Meter Group requirements.
 - Up to two receptacle / circuit breaker kits can be field-installed in each powerhead. Order mounting bridge and receptacle kits separately from above. For three receptacles or factory-installed kits, contact factory.
 - Receptacle / circuit breaker kits include receptacle, circuit breaker, connected wire, cover plate and mounting screws. Other receptacle / circuit breaker kits available.
 - ◆ Stock item – availability subject to prior sale.
- Non-stock items – minimum order quantity required.

Utility requirements for this equipment may vary. Always consult the serving utility for their requirements before ordering or installing equipment.

ACCESSORIES

VERSA-PED

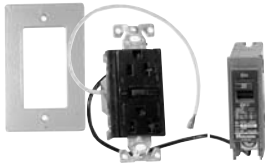
STANDARD FEATURES



K5400-BRIDGE-2POS
Receptacle bridge – two position



K5400-BRIDGE-1POS
Receptacle bridge – single position



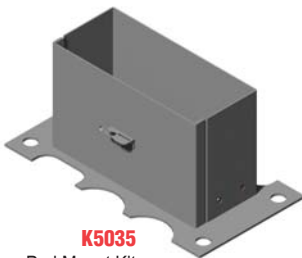
K5400-520GR
20 amp 120V GFI receptacle and circuit breaker kit



K5400-1450
50 amp 120 / 240V receptacle and circuit breaker kit



K5400-TT30
30 amp 120V receptacle and circuit breaker kit



K5035
Pad Mount Kit



K5415
Stabilizer Foot



K3450
TV / Phone Side Bracket



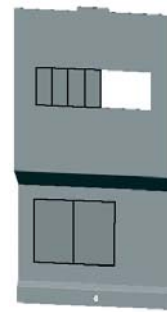
200 AMP Ringless Meter Socket with Horn Bypass

Stainless steel Locking Flip Latch

Series or parallel wired plug-in main circuit breaker, 100 - 200 amp, 22K AIC

125 amp, 4-circuit plated copper interior. Accepts up to (2) 2-pole or (4) 1-pole plug-in type circuit breakers

Removable deadfront and lockable Type 3R in-use cover



Rear connected line lugs, dual #6-350 MCM for loop or parallel wiring

Lockable and removable rear covers for lay-in line-side wiring

Galvanized & powder coated one-piece direct burial post

Bottom cover has rolled edge to protect service wires

APPROVED BY

