

# Milbank Trans-S Cabinets

## LIPA Approved



U4554-X-Z21-LI



U4523-X-Z11-LI



U4166-X-T-Z21-LI

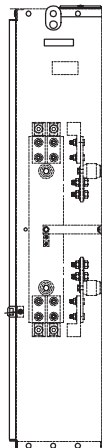
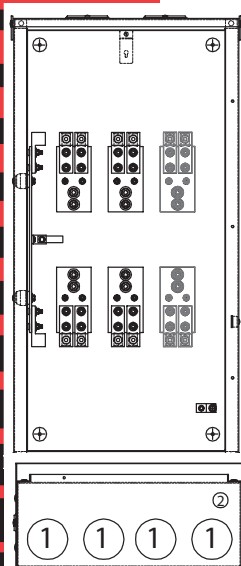


U4163-X-T-11-LI

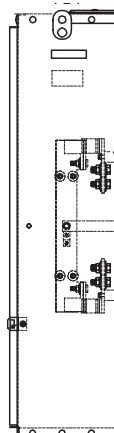
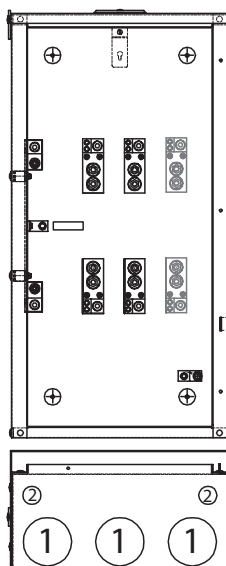


CATALOG NUMBER	SERVICE	AMP	DIMENSIONS			CONCENTRIC KOs	
			D"	W"	H"	1	2
U4554-X-Z21-LI	1Ø	200/400	10	21	41	4	1 1/4
U4166-X-T-Z21-LI	1Ø	400/800	10	26	51	4	1 1/4
U4523-X-Z11-LI	3Ø	200/400	10	21	41	4	1 1/4
U4163-X-T-11-LI	3Ø	400/800	10	26	51	4	1 1/4

- Designed to be used with built-in socket base meters
- 200 / 400 or 400 / 800 amp maximum, 600 VAC
- 1Ø3W or 3Ø4W
- For indoor or outdoor use—rainproof Type 3R enclosure
- Prewired from top of test switch to meter socket base. Wiring “pig tail” provided from bottom of test switch into CT compartment (to be completed at time of CT installation)
- Ringless metering enclosure is totally isolated from CT compartment
- Lugs provided—rated single 600 kcmil - #4 awg
- Cabinets are constructed from code gauge galvanized steel
- Tin plated bus bar is mounted on standoff insulators
- Right side of cabinets allow clearance for conductors
- Short circuit current withstand capability is 50K symmetrical amps
- Furnished with 1/2" - 13 studs, washers and hex nuts with conical sems for CT mounting



4163  
4166

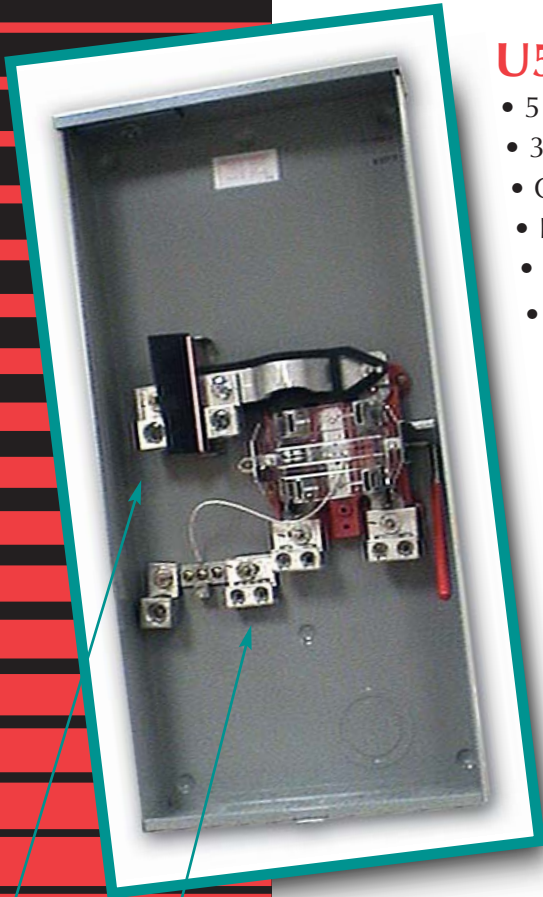


4554  
4523



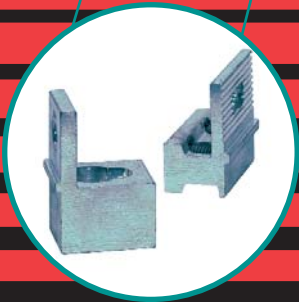
# Milbank Meter Sockets

## 320 AMP – LIPA Approved



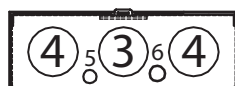
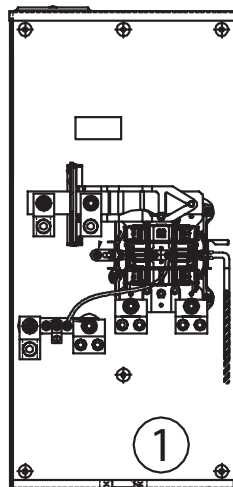
### U5073-X-K3L-K2L

- 5 terminal, 1Ø3W
- 320 amp continuous
- Overhead / Underground service
- Heavy duty lever bypass, jaw clamping
- Milbank reliability
- ANTI-ROTATION LUGS INCLUDED – anti-rotation bar on the lugs allow the installer to torque down on the conductor without the lug rotating – EASIER, FASTER, SAFER, MORE RELIABLE INSTALLATION
- FACTORY INSTALLED LUGS...
  - Line side – single barrel up to 600 kcmil
  - Load side – double barrel up to 350 kcmil
  - Installed on the bus with proper torque values by the factory
- Saves on-field installation time with lugs already installed. No more, "I FORGOT THE CONNECTORS" at the jobsite.
- MORE WIRING ROOM...easier to wire with different sizes of conductor



### 320 AMP CONTINUOUS-5 TERMINAL-1Ø3W-RINGLESS-600 VAC

CATALOG NUMBER	SERVICE	CONNECTORS CU/AL		BY-PASS	DIMENSIONS			CONCENTRIC K.O.'S					
		LINE	LOAD		D"	W"	H"	1	2	3	4	5	6
U5073-X-K3L-K2L	OH/UG	#4-600 kcmil * (2) 1/0 250 kcmil	TWIN * #6-350 kcmil	LEVER	4 <sup>7</sup> / <sub>8</sub>	15	31 <sup>1</sup> / <sub>2</sub>	3	3	3	3	1/4	1/4, 1/2



**BYPASS:** The lever supplies the clamping action and also operates bypass device

**CONNECTORS:** Factory installed #4-600 kcmil line side, double barrel #6-350 kcmil load side.

\* **U/L LISTED** based on parallel 250 kcmil connectors maximum



816.483.5314 phone

816.483.6357 fax

www.milbankmfg.com

**MILBANK**

