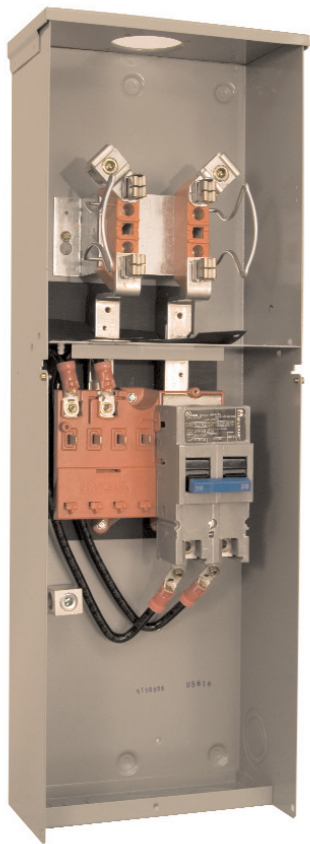
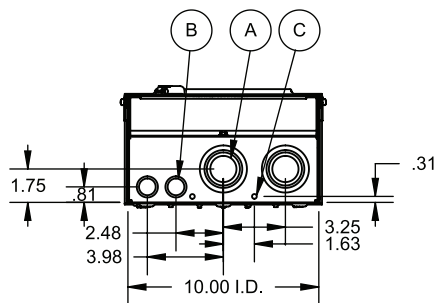
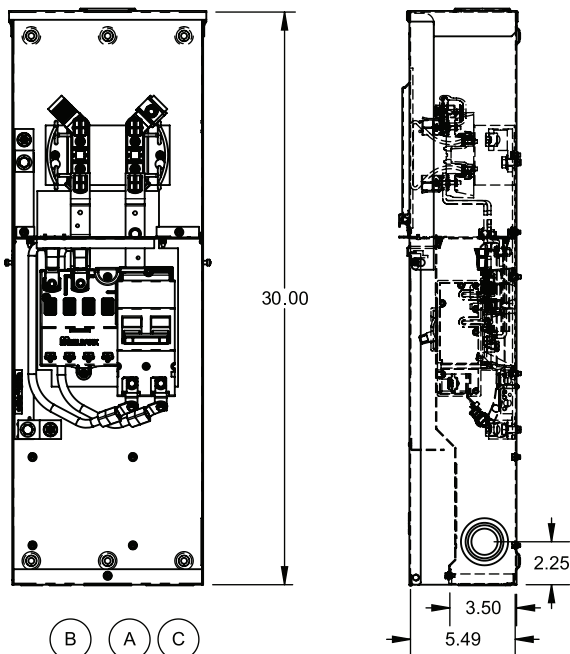


# Milbank Meter Sockets

## U5818 200 Amp Ringless Meter Main w/Branch Provisions



U5818 with Series Wired Main



KO's	
A=	1, 1.25, 1.5, 2
B=	0.5, 0.75
C=	0.25 Solid

### SPECIFICATIONS

- UL listed
- 200 amp maximum, 120/240 volt, single phase, three wire meter socket
- Ringless meter socket with optional horn bypass and stainless steel latch
- Short circuit withstand rating 10K AIC.
- Type 3R construction for durable outdoor use, lockable and sealable
- Milbank grey polyester powder coat finish
- Wire terminations accept copper or aluminum conductors
- Line & Neutral: (2) #6-350 kcmil per phase
- Load Neutral: (1) #6-350 kcmil / Load (CB): 2/0 to 300 kcmil per pole
- Line / Load Ground: (2) #14-1/0, (4) #14/6
- Milbank plug-in main circuit breaker. Available in 100, 125, 150 & 200 amp. Type UQFPH-M.
- Four-circuit plated copper interior accepts (2) 2-pole or (4) 1-pole standard plug-in type circuit breakers up to a total of 125 amps maximum. Acceptable manufacturers: Cutler-Hammer, GE, Square D or Siemens
- Factory or field installable receptacle bridge and receptacle / circuit breaker kits available. See Accessories.

877.483.5314 phone

816.483.6357 fax

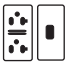


www.milbankmfg.com



# U5818 Ordering Information

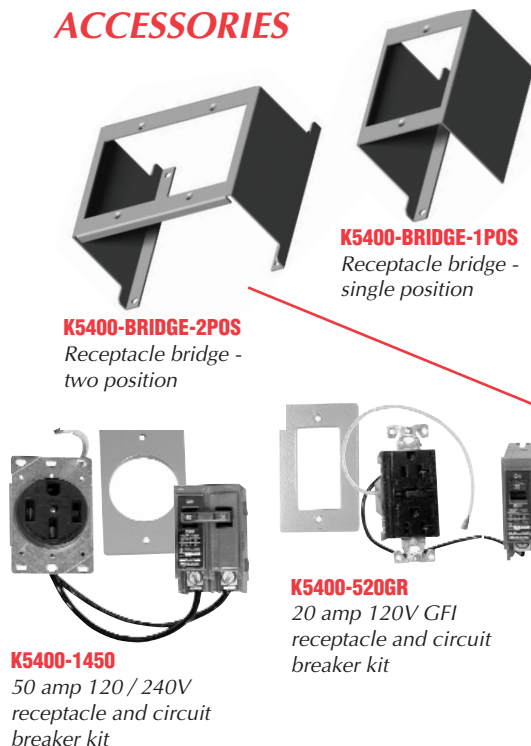
<u>CATALOG NUMBER</u>	<u>MAIN BREAKER</u>	<u>MAIN CB</u>	<u>BRANCH</u>	<u>WEIGHT (lbs)</u>
◆ <b>U5818-RL-100S</b>	◆ UQFPH-M-100	100	4 Circuit	33
◆ <b>U5818-RL-125S</b>	◆ UQFPH-M-125	125	4 Circuit	33
◆ <b>U5818-RL-150S</b>	◆ UQFPH-M-150	150	4 Circuit	33
◆ <b>U5818-RL-200S</b>	◆ UQFPH-M-200	200	4 Circuit	33
◆ <b>U5818-RL</b>	Provision for UQFPH-M Series	—	4 Circuit	33

## **RECEPTACLE / CIRCUIT BREAKER KITS AND ACCESSORIES (ORDER SEPARATELY)**

<u>CATALOG #</u>	<u>RECEPTACLE</u>	<u>CIRCUIT BREAKER</u>	<u>CONDUCTOR</u>	<u>CONFIGURATION</u>
◆ <b>K5400-520GR</b>	5-20R Duplex GFI	20 Amp, 1 Pole	12 Awg	GFI Rec. 
◆ <b>K5400-TT30</b>	TT30R	30 Amp, 1 Pole	10 Awg	
◆ <b>K5400-1450</b>	14-50R	50 Amp, 2 Pole	8 Awg	
◆ <b>K5400-BRIDGE-1POS</b>	Self-grounded one position receptacle bridge with hardware			
◆ <b>K5400-BRIDGE-2POS</b>	Self-grounded two position receptacle bridge with hardware			
◆ <b>K5T</b>	5th Terminal for 208y / 120 volt 3-wire service			
◆ <b>K5193</b>	Bus kit to convert series-wired main breaker to parallel			
◆ <b>K5194</b>	Wire kit to convert parallel-wired main breaker to series			

- Up to two receptacle / circuit breaker kits can be field-installed in each powerhead. Order mounting bridge and receptacle kits separately from above.
- Receptacle / circuit breaker kits include receptacle, circuit breaker, connected wire, cover plate and mounting screws. Other receptacle / circuit breaker kits available.
- ◆ Stock item – availability subject to prior sale.
- ◆ Non-stock items – minimum order quantity required.

## **ACCESSORIES**



## **STANDARD FEATURES**

