

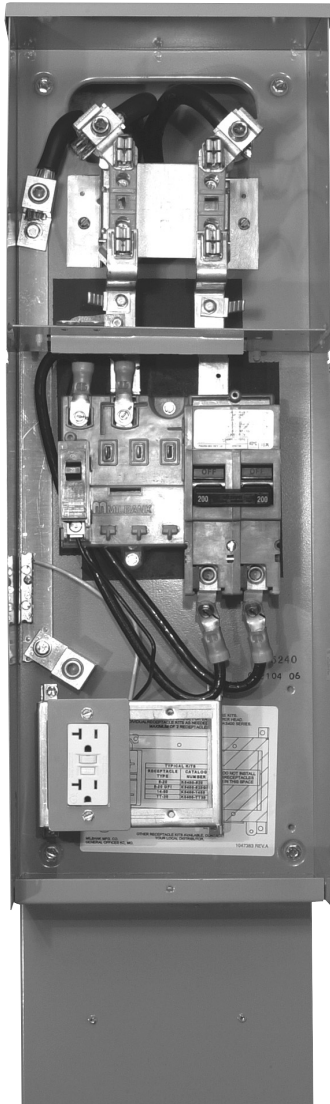
Versa-Ped Service Pedestals

U5240 & U5241 Series
Ring Type Meter

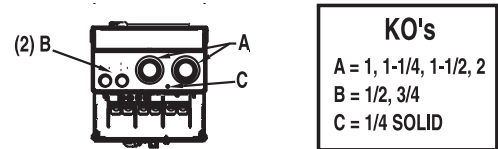
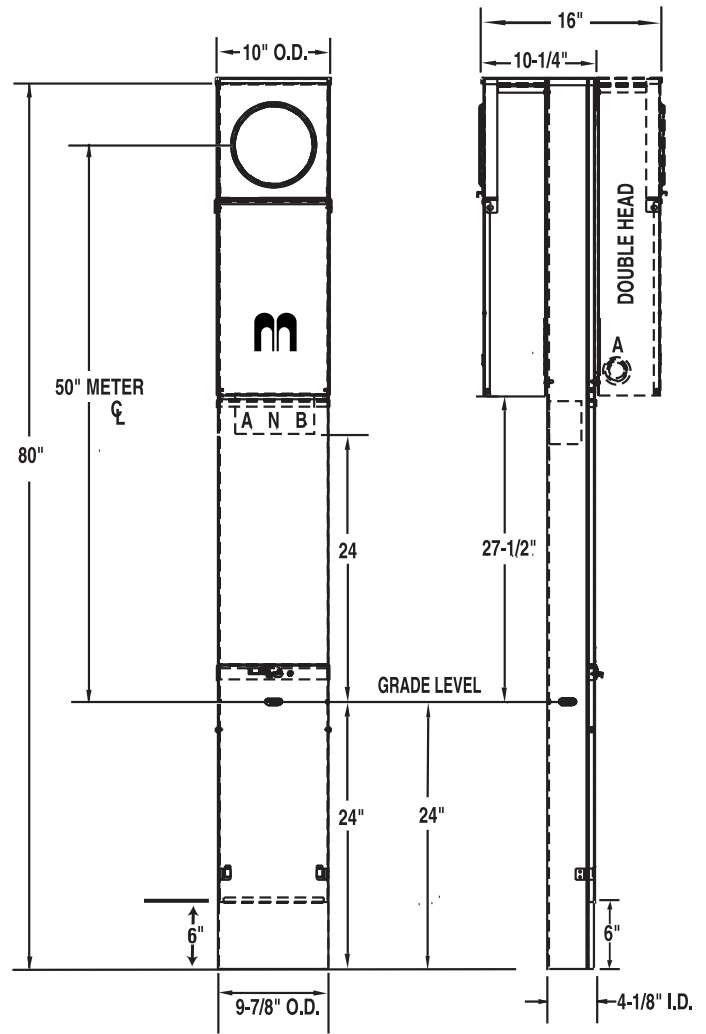


MILBANK[®]





U5240-O-200S with series wired main & K5400-520GR kit



KO's	
A	1, 1-1/4, 1-1/2, 2
B	1/2, 3/4
C	1/4 SOLID

SPECIFICATIONS

- UL listed – conforms to EUSERC drawing number 307
- 200 amp maximum, 120/240 volt, single phase, three wire meter socket
- Ring type meter socket with stainless steel screw-type sealing ring
- Short circuit withstand rating 22K AIC.
- Type 3R construction for durable outdoor use, one piece post – lockable and sealable
- Milbank grey polyester powder coat finish
- Wire terminations accept copper or aluminum conductors
- Line & Neutral: (2) #6-350 kcmil per phase
- Line Ground: (4) #14-1/0
- Load (CB): 2/0 to 300 kcmil per pole
- Load Neutral: (1) #6-350 kcmil
- Load Ground: (2) #14-1/0, (4) #14/6
- Milbank plug-in main circuit breaker. Available in 100, 125, 150 & 200 amp. Type UQFPH-M.
- Four-circuit plated copper interior accepts (2) 2-pole or (4) 1-pole standard plug-in type circuit breakers up to a total of 125 amps maximum. Acceptable manufacturers: Cutler-Hammer, GE or Siemens
- Factory or field installable receptacle bridge and receptacle / circuit breaker kits available. See Accessories.



SINGLE PEDESTAL (Direct Burial)

<u>CATALOG NUMBER</u>	<u>MAIN BREAKER</u>	<u>MAIN CB</u>	<u>BRANCH</u>	<u>WEIGHT (lbs)</u>
◆ U5240-O-100S	◆ UQFPH-M-100	100	4 Circuit	82
◆ U5240-O-200S	◆ UQFPH-M-200	200	4 Circuit	82
◆ U5240-O (parallel wired)	provision for UQFPH-M Series	—	4 Circuit	80

SINGLE PEDESTAL (Pad Mount)

◆ U5242-O-200S	UQFPH-M-200	200	4 Circuit	82
◆ U5242-O (parallel wired)	provision for UQFPH-M Series	—	4 Circuit	80




DOUBLE PEDESTAL (Direct Burial)

<u>CATALOG NUMBER</u>	<u>MAIN BREAKER</u>	<u>MAIN CB</u>	<u>BRANCH</u>	<u>WEIGHT (lbs)</u>
◆ U5241-O-100S	(2) UQFPH-M-100	100	4 Circuit	115
◆ U5241-O-200S	(2) UQFPH-M-200	200	4 Circuit	115
◆ U5241-O (parallel wired)	provision for (2) UQFPH-M Series	—	4 Circuit	111

DOUBLE PEDESTAL (Pad Mount)

U5243-O (parallel wired)	provision for (2) UQFPH-M Series	—	4 Circuit	111
--------------------------	----------------------------------	---	-----------	-----

RECEPTACLE / CIRCUIT BREAKER KITS AND ACCESSORIES (ORDER SEPARATELY)

<u>CATALOG #</u>	<u>RECEPTACLE</u>	<u>CIRCUIT BREAKER</u>	<u>CONDUCTOR</u>	<u>CONFIGURATION</u>
◆ K5400-520GR	5-20R Duplex GFI	20 Amp, 1 Pole	12 Awg	 GFI Rec.
◆ K5400-TT30	TT30R	30 Amp, 1 Pole	10 Awg	
◆ K5400-1450	14-50R	50 Amp, 2 Pole	8 Awg	
◆ K5400-BRIDGE-1POS	Self-grounded one position receptacle bridge with hardware			
◆ K5400-BRIDGE-2POS	Self-grounded two position receptacle bridge with hardware			
◆ K5415	Stabilizer Foot with hardware			
◆ K5035	Pad Mount Kit with hardware for U5242/43 pad mount pedestals required			
◆ K5T	5th Terminal for 208y / 120 volt 3-wire service			
◆ K5193	Bus kit to convert series-wired main breaker to parallel			
◆ K5194	Wire kit to convert parallel-wired main breaker to series			
◆ K3450	Telephone / CATV mounting bracket (mounts left or right)			

- Up to two receptacle / circuit breaker kits can be field-installed in each powerhead. Order mounting bridge and receptacle kits separately from above. For three receptacles or factory-installed kits, contact factory.
- Receptacle / circuit breaker kits include receptacle, circuit breaker, connected wire, cover plate and mounting screws. Other receptacle / circuit breaker kits available.
- K5415 Stabilizer Foot sold separately. Recommended for double pedestals.
- Pad mount pedestals require **K5035** pad mount kit. Order separately.
- ◆ Stock item – availability subject to prior sale.

Non-stock items – minimum order quantity required.

Utility requirements for this equipment may vary. Always consult the serving utility for their requirements before ordering or installing equipment.

VERSA-PED

ACCESSORIES

STANDARD FEATURES

K5400-BRIDGE-2POS
Receptacle bridge – two position

K5400-BRIDGE-1POS
Receptacle bridge – single position

K5400-520GR
20 amp 120V GFI receptacle and circuit breaker kit

K5400-1450
50 amp 120 / 240V receptacle and circuit breaker kit

K5400-TT30
30 amp 120V receptacle and circuit breaker kit

K5035
Pad Mount Kit

K5415
Stabilizer Foot

K3450
TV / Phone Side Bracket

200 AMP Ring-type Meter Socket

Stainless steel screw-type sealing ring

Series or parallel wired plug-in main circuit breaker, 100 - 200 amp, 22 K AIC

125 amp, 4-circuit plated copper interior. Accepts up to (2) 2-pole or (4) 1-pole plug-in type circuit breakers

Removable deadfront and lockable Type 3R in-use cover

Rear connected line lugs, dual #6-350 MCM for loop or parallel wiring

Lockable and removable rear covers for lay-in line-side wiring

Galvanized & powder coated one-piece direct burial post

Bottom cover has rolled edge to protect service wires

MILBANK

