

# 50 Amp Spa Box—GFCI Protection

## For use as a Hot Tub Disconnect or Sub Panel Enclosure—Type 3R



### SPA BOX WITH GFCI PROTECTION

- 240 volt ground fault protection
- U/L listed, Type 3R rainproof
- 2 pole, 50 amp GFCI breaker protection
- Milbank reliability
- Easy installation
- Compact size:  
8" h x 7 1/2" w x 3 3/4" d
- 3 or 4 wire installation
- 1Ø, 120 / 240 VAC
- Standard package of 12
- 2 extra single pole breaker spaces
- 100 amp overall rating



### SUB PANEL BREAKER ENCLOSURE

- Use as a 100 amp, 4 circuit sub panel enclosure

Milbank's sub-panel enclosure has a compact design that meets NEC wire bending space requirements, and complies with Article 680-42 in the NEC for GFCI protection. All units are designed with a padlock provision on the cover for security. This enclosure is constructed of G90 galvanized steel and finished with an attractive, light gray, baked powder coating. Our state-of-the-art finish combines epoxy and polyester hybrid resins into a powder coating which is then electrostatically applied. This offers a durable, nonfading finish.

Type 3R design allows use in indoor or outdoor applications.

AMP	TYPE	CATALOG NUMBER	WT. @ #	LINE CONNECTOR WIRE RANGE		GROUND CONNECTOR WIRE RANGE	DIMENSIONS		
				CU	AL	CU/AL	D"	W"	H"
50	BREAKER	U4881-O-50GB	8	#14-1/0	#14-1/0	#14-1/0	3 3/4	7 1/2	8
60	BREAKER	U4881-O-60GB	8	#14-1/0	#14-1/0	#14-1/0	3 3/4	7 1/2	8

816.483.5314 phone

816.483.6357 fax

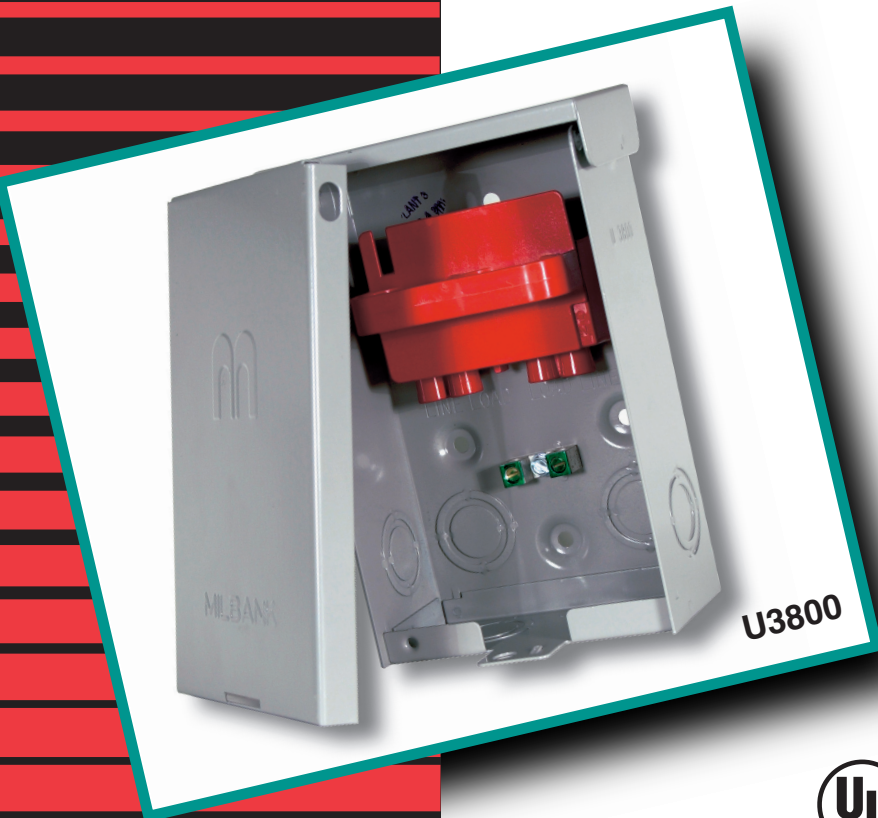
www.milbankmfg.com

4881-ACD 10/07 (7.5K)

# 60 Amp Non-Fusible Air Conditioner Disconnect Type 3R



- *UL Listed Without Deadfront*
- *UL Listed as Enclosed Pullout Switch UL 1429*
- *UL Listed to Canadian Standards*
- *Line and Load Terminals Fully Enclosed*
- *Type 3R Rainproof Enclosure*
- *Duplex Ground Connector*
- *One-Inch Concentric Knockouts*
- *1Ø, 240 VAC*



Milbank's air conditioner/equipment disconnects have a compact design that meets NEC® wire bending space requirements, and complies with article 440-14 in the NEC® for Air Conditioning Equipment. To insure the safest conditions, Milbank disconnect pullers are designed to be reversible so they may be reinstalled in the OFF position.

All units are designed with a padlock provision on the cover for security.

### TECHNICAL INFORMATION

AMP	TYPE	CATALOG NUMBER	MAX H.P.	WT. @ #	LINE & LOAD CONNECTOR WIRE RANGE		GROUND CONNECTOR WIRE RANGE	DIMENSIONS			WIRE RATING	
					CU	AL	CU/AL	D"	W"	H"	CU °C	AL °C
60	NONFUSIBLE	U3800	10	3.25	#14-#2 AWG	#12-#2 AWG	#14-#4 AWG	3	5	8	60°/75°	60°/75°

### ALSO AVAILABLE

30	FUSIBLE	U3803	3	3.7	#14-#2 AWG	#12-#2 AWG	#12-#2 AWG	3	5	9-1/4	60°/75°	60°
60	FUSIBLE	U3806	10	3.7	#14-#2 AWG	#12-#2 AWG	#12-#2 AWG	3	5	9-1/4	60°/75°	60°

816.483.5314 phone

816.483.6357 fax

www.milbankmfg.com

